



# NEWS FROM The Park

Week 8 4/11/2022

## **Message from Miss Wheeler**

Welcome back to Autumn Term 2! Every class has made a great start to the new half term and are ready to continue their learning journey. There are lots of exciting events happening this half term including fundraising for Children In Need, 'wow events' which we have introduced at the start of every half term to engage and excite children in their new project-related learning, as well as Christmas and winter celebrations.

Our Brunswick Park value for this half term is 'courage.' We will be exploring this value during assemblies and RSE lessons. Please talk to your children about the theme of courage and what it means to them.

Have a wonderful weekend!

## **EYFS and KS1 Phonics Workshop – Tuesday 15<sup>th</sup> November at 6pm**

As many of you are aware, we are following a new phonics scheme this academic year, following an update from the Department for Education around phonics teaching.

We have decided to follow the Essential Letters and Sounds phonics programme based on Letters and Sounds (2007). This new phonics programme will support your children in making quick progress to become fluent and confident readers.

We are holding a workshop for EYFS and KS1 parents and carers to share with you how we teach phonics, and how you can support your child with reading at home.

The workshop is being held on Tuesday 15<sup>th</sup> November at 6pm in the school hall.

Please kindly email the office on [office@brunswickpark.barnetmail.net](mailto:office@brunswickpark.barnetmail.net) to let us know if you will be attending by Monday 14<sup>th</sup> November.

We hope you can make it.

## **Anti-Bullying**

We will be selling Anti-Bullying wrist bands every Tuesday throughout November, during tuck shop. The bands are 50p each. If your child is in Nursery or Reception and does have tuck shop, you can contact Miss Heath or Tracy to buy one.

## **Children in Need 2022: Friday 18th November**

This year, the children will be making 'Pudsey' fridge magnets during their art lessons in the week leading up to Friday 18th.

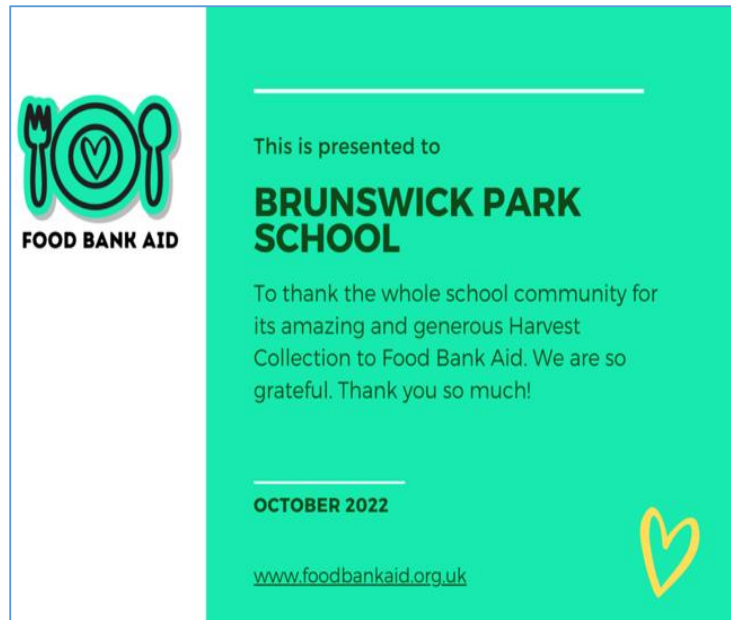
We are asking for a suggested donation of £2 per child for this great cause, that as a school we have always supported. You will be able to pay via SchoolMoney.

There will also be a cake sale after school on the day. All donations will be gratefully received.

As this is already a non-uniform day for the PTA, please feel free to add some yellow or spots to your outfits.

## Food Bank

We had a great response to our Food Bank Appeal. Thank you all. Below is our certificate of thanks.



## Post Card Competition

A huge well done to all those that entered the Brunswick Park Values Postcard competition. All the designs were excellent and I loved looking through them all. Everyone who entered has received a special certificate to congratulate them on their hard work.

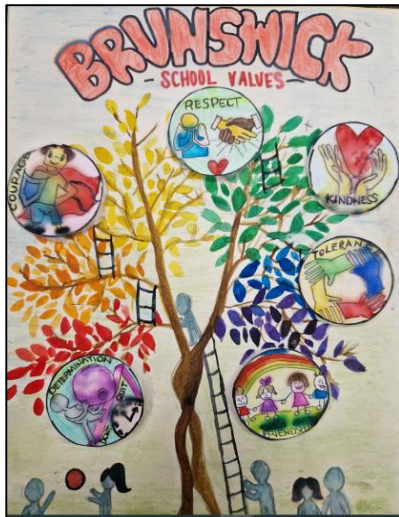
Below are the winning designs that will be turned in to postcards - please keep your eyes peeled for these!



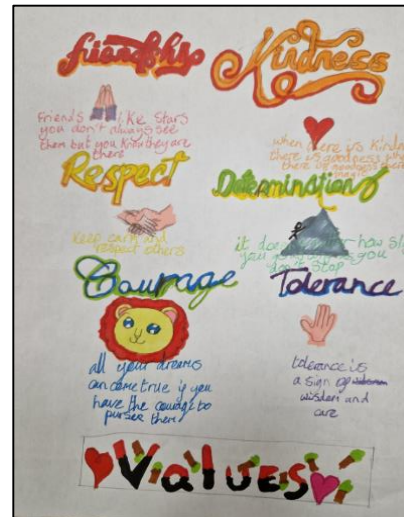
Ashwene- 3V



Sofia- 2F



Sofia Ava - 2S



Emily- 6K

### PTA- Christmas Fair

The countdown to the Christmas Fair is well underway with four weeks to go to the big event on Saturday 3 December - 12 noon to 3pm. Further information about the fair will be shared in each week's newsletter and via your class reps as well as on ClassDojo and Tapestry.

Firstly this week we want to say a big thank you for the generous donations from today's non-uniform collection - there are now some brilliant presents waiting to be wrapped in the Secret room - for a reminder of how it works please see the PTA newsletter sent out by school on 14 October. Thank you also to everyone who has volunteered to have a board advertising the fair - these have started going up and each one displayed earns £10 for the PTA.

Secondly - the fair can only be a success with help from across the school community and this week we want to let you know how you can help make it a great day:

1. Volunteer an hour of your time on the day of the fair to help run a stall - no prior experience is required as instructions and support are provided - Your class teachers and class reps will be asking people to sign up from Monday 14 November - please help make this a smooth process by volunteering early on.
2. Donate cakes or biscuits for our food & drink stall. The team on this stall will rustle up tasty mulled wine and warming hot chocolate as well as traditional tea and coffee. The perfect accompaniment is of course a yummy cake or biscuit. If you can bake or buy cakes, biscuits or mince pies to bring along on 2 or 3 December please let us know by email to [brunswickparkpta@gmail.com](mailto:brunswickparkpta@gmail.com) or via your class rep. Please remember the school's no nuts rule.
3. Donate a dish for the International Buffet. Back by popular demand this stall provides an opportunity to lunch on a variety of foods donated by members of our school community. Home cooked dishes always go down a treat but equally welcome are donations of bought items such as meats, cheeses, olives, bread and nibbles such as sausages and

sausage rolls. If you can bring something along on 3 December for the buffet please let us know by email to [brunswickparkpta@gmail.com](mailto:brunswickparkpta@gmail.com) or via your class rep. Please remember the school's no nut rule.

Watch this space - next week's newsletter will be accompanied by the fair brochure with more details of the planned activities and the raffle. As always if you have any questions please email us: [brunswickparkpta@gmail.com](mailto:brunswickparkpta@gmail.com)

### **Dates for the Diary**

Tuesday 8<sup>th</sup> November 2022- 5C to the Chocolate Museum

Wednesday 9<sup>th</sup> November 2022- Flu vaccinations – Reception – Year 6

Friday 11<sup>th</sup> November 2022- 5H to the Chocolate Museum

Monday 14<sup>th</sup> November- Year 3 to the British Museum

Friday 18<sup>th</sup> November- Non Uniform Day in exchange for Chocolate and Sweet donations

Monday 21<sup>st</sup> November – 2S to Science Museum

Wednesday 23<sup>rd</sup> November 2F to Science Museum

Friday 25<sup>th</sup> November Year 2 Music Performance- Parents welcome

Friday 2<sup>nd</sup> December - Non Uniform Day in exchange for bottle donations

Saturday 3<sup>rd</sup> December – Christmas Fair - 12pm - 3pm

Monday 5<sup>th</sup> December- Whole School to see Rapunzel on Ice

Tuesday 6<sup>th</sup> December - Year 5 Carol Concert at St Mary's 6pm

Thursday 8<sup>th</sup> December – Reception production 9.15am- Parents welcome

Friday- 9<sup>th</sup> December- Year 1 Christmas Concert- 9.15am- Parents welcome

Thursday 15<sup>th</sup> December- Year 3 Christmas sing song 2.45pm- Parents welcome

Friday 16<sup>th</sup> December – End of Term. Break up at 1.30pm

## Attendance and Punctuality

Congratulations to 6H who are the winners of our attendance award again with a fantastic 99%. They finally knocked 2F of the top spot.

Congratulations to RA, 1EB, 2S, 4M AND 6H who all had the best punctuality during the week before half term.



Class	Head of School's Award	
Nursery	Laurie	

Class	Stars of the Week	Head of School's Award
RA	Adam and Elijah	Aimee
RS	Eva and Noah	Alexander
1BW	Caitlyn and Theo	Isla
1EB	Eren and James	Anuar
2F	Ishaan and Omar	Ayana
2S	Harold and Hayley	Aydin
3R	Whole class	Isadora
3V	Alexander and Autumn-Rose	Rafaelo
4F	Georgia and Omar	Sid
4M	Alfie and James	Nikola
5C	Leo and Lukas	Imran
5H	Antonia and Ruby	Rylan
6H	Whole class	Amy
6K	Whole class	Tyler

House Point Trophy winner is...



**Tawny** – well done!

Congratulations for your amazing effort this week.

You have worked very hard – well done!