

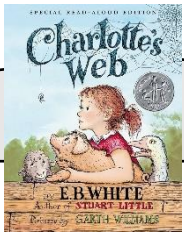
English

We will be writing a non-chronological report and persuasive letter.

We will be developing our writing by using the following SPaG skills to:

- use the structure of a wider range of text types (including the use of simple layout devices in non-fiction).
- use tense consistently,
- use a range of conjunctions to show time, place and cause
- use subordinate clauses, extending the range of sentences with more than one clause by using a wider range of conjunctions (including when, if, because, and although).

We will be reading



Reading will take place in Year 3 as whole class sessions. Sessions will follow the agreed school sequence for the teaching of reading.

We will be reading 'Charlotte's Web' to develop our fluency. Fluency sessions will build upon pupil's accuracy, automaticity and prosody. In extended sessions, pupils will spend an extended amount of time reading. Discussion of the text also forms part of this lesson and will focus on a range of questioning.

Reading books will be changed regularly and accelerated reading assessments are encouraged.

Maths

We will be studying money, time, shape and statistics:

- add and subtract amounts of money to give change, tell and write the time from an analogue clock, estimate and read time with increasing accuracy to the nearest minute, compare durations of events
- draw 2-D shapes and make 3-D shapes, recognise angles as a property of shape, recognise turns, identify whether angles are greater than or less than a right angle, identify horizontal and vertical lines and pairs of perpendicular and parallel lines
- interpret and present data using bar charts, pictograms and tables, solve one-step and two-step questions using information presented.

Science

We will continue to work on our topic of Animals including humans which we started in Spring 2 and then:

Our project is: Plants

We will be:

- identifying and describing the functions of different parts of flowering plants
- exploring the requirements of plants for life and growth and how they vary from plant to plant
- investigating the way in which water is transported within plants
- exploring the part that flowers play in the life cycle of flowering plants, including pollination, seed formation and seed dispersal.

RE

We will be learning about Judaism.

Our Big Question is:
How important is it for Jewish people to do what God asks them to?

Links to previous learning are:

- in Year 1 pupils discussed the importance of Chanukah and Shabbat to Jewish children
- in Year 2 pupils learnt about Rosh Hashanah and Yom Kippur.

Geography

Our project is: Farm to Fork

Our Big Question is: Where does our food come from and how does it get to our plate?

We will:

- map and describe the journeys that food take to get to our plate from around the world
- start to understand land use in the UK
- compare different types of farming
- discuss the threat of farming
- discuss food miles and fair trade.

We will be getting into our school garden to plant our own crops and into the kitchen to prepare a healthy, balanced meal.

Links to our previous learning are:

- building on our knowledge of the world map to identify where foods come from
- making links with climate and cultures from previous studies.

Art

DT

Within this term, we will be experimenting watercolour paint, brush strokes and the use of oil pastels to create 'owl eyes'.

We will be working like artists/designers by developing and using these skills by:

- using sketchbooks for recording line, pattern and shape
- using oil pastel and water colour paint to create colour and pattern
- improving the mastery and control of our techniques.

PE

This half term we will be swimming between 3rd – 14th June.

This half term our learning theme is: run, jump, throw and hands, feet, implement.

We will be learning to:

- master basic movements including running, jumping and catching
- master the skills of balance, agility and coordination.
- Develop simple tactics for attacking and defending
- Engage in competitive and co-operative physical activities.

Brunswick Park Primary and Nursery School

Summer 2 in Year 3

Music

We will be learning about/to:

- continue to recognise styles, find the pulse, recognise instruments, listen and discuss other dimensions of music
- continue to sing, learn about singing and vocal health
- continue to work together in a group/ensemble and perform to each other and an audience
- discuss and evaluate work together.

French

We will be listening to the story Little Red Riding Hood.

We will be learning to:

- say 8 words from the story
- say 8 body parts in French
- listen for new vocabulary from the story
- spell new vocabulary from the story.

Computing

We will be learning to be developing our programming skills.

We will be learning to:

- use conditional statements (if, when)
- write a programme using simple algorithms
- detect and debug simple errors
- add inputs to control my sprite.

PSHE

We will be learning about: tolerance

We will be thinking about our unique skills and attributes.

Pupils should be able to:

- recognise positive things about themselves and their achievements
- set goals to achieve personal outcomes
- to consider their unique skills and attributes
- talk about the jobs/careers they are familiar with.

Staff Team

3A – Miss Applin & Miss Howell

3TJ – Miss Jordan, Mr Bogush, Mrs Foley & Miss Mehmet

General Information

PE 3A – Monday and Thursday

PE 3TJ – Thursday and Friday

Please come to school on these days wearing your PE kit.

We are finding the children are hungry during the morning.

Please provide your child with a snack - fruit or vegetables.

Dates for your diary

Monday 3rd June – Friday 14th June – Swimming

Friday 14th June – PTA Father's Day Secret Room

Friday 21st June – Fun Run

Friday 28th June – Maths Day

Friday 28th June – PTA Summer Fair

Friday 5th July – KS2 Sports Day

Friday 19th July – End of Term. School closes at 1.30pm.

Home Learning

Read for 15 minutes every day.

Please encourage your child to initial their reading record and reflect upon their book when completed and complete the appropriate AR quiz – this may be done at home.

Homework is given out on Fridays and expected by Wednesday.

Please talk to the class adults if there are any issues before the day that it is due.

Please practise your times tables whenever you can!

Useful websites or optional activities to support at home

<https://spellingframe.co.uk/>

<https://global-zone61.renaissance-go.com/welcomeportal/1894515>

<https://www.myon.co.uk/login/>

<https://www.mymaths.co.uk/>

<https://ttrockstars.com/>