



Brunswick Park Primary and Nursery School

Autumn 2 in Year 6



We will be writing:

- An explanation text about the Heart and the Circulatory System.
- A narrative about the animation 'Beyond the Lines' relating to our WW2 topic.
- We will be developing these SPaG skills: Going over key word classes and embedding grammar into our English work.



Our focus in maths is: Number

We will be learning about:

- Multiplication and Division
- Fractions
- Position and Direction
- Measurements in units

We will also be looking at reasoning and problem solving questions.



Our project is: Light

Our Big Question is 'How do we see?'

We will:

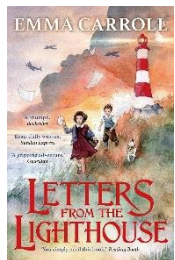
- understand that we see things because light travels between light sources and our eyes
- recognise that light travels in straight lines
- explain that we see objects because they give out or reflect light into our eyes



We will be learning about Christianity.

Our Big Question is:

Is the Christmas story true?



This term we will be reading 'Letters from the Lighthouse'.

In history and geography, we will be learning about World War Two.

Our Big Question is:

What was life like on the Home Front and how did WW2 impact on our local area?

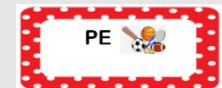


In art, our project is:

Line Drawing, Sculpture and the Blitz mixed media.

We will be focusing on learning about the artist Henry Moore. This links to our WW2 project.

In DT, we will be designing our own wartime structure. We will be testing how well different types of shaped structures perform under load and thinking about how they can be made stronger.



This half term we are...

Following the Beyond the Physical scheme of work.

We will be working on the Try, Train and Improve unit of work and Modified Volleyball.

Brunswick Park Primary and Nursery School

Autumn 2 in Year 6

French 

We will be learning about: Being at School.

We will be learning the school subjects and what we like and dislike.

Computing 

We will be learning:

How a computer communicates.

We also will be looking at digital media choices and the impact the internet has.

PSHE 

We will be learning about: Courage and conflict resolution.

The children will take part in a CREW workshop about bullying with a focus on bystanders, peer on peer abuse and online bullying.

General Information

PE is on a Monday and Wednesday for 6K

and Wednesday and Friday for 6F

Children should be coming into school with their PE kit.

If you have a question or need to send us a message please email or call us via the office. Teachers cannot answer Dojo messages.

Dates for your diary

7th November 2024 – Anti-bullying workshop

26th November 2024 – RAF Museum trip

29th November 2024 – WW2 workshop

6th December 2024 – Christmas Fair

Home Learning

Daily reading

Homework set on a Friday and due on a Wednesday

Weekly spelling practice

Useful websites or optional activities to support at home

Spelling frame

My Maths